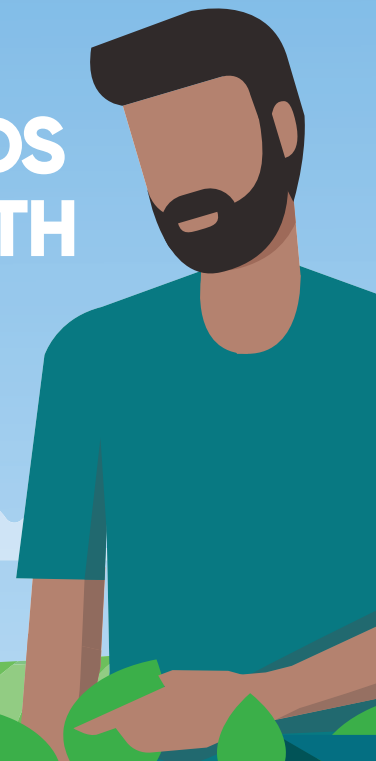


MANAGING PROBLEM WEEDS IN ENLIST E3™ SOYBEANS WITH A PROGRAM APPROACH



THE PROGRAM APPROACH is a **two-pass system** that uses Multiple Modes of Action to effectively control weeds and manage herbicide resistance in **Enlist E3™ soybeans**.

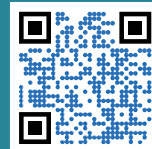
Weed	Modes of Action	Preplant or Pre-emergence with Residual Activity	Post-emergence up to R1 or R2	Benefits
Canada fleabane (glyphosate resistant)	2,4,5,9,10	Canopy™ PRO herbicide Apply as a burndown with glyphosate and a second effective mode of action	Enlist™ 1 + Liberty® 200 SN* OR Enlist 1 + glyphosate	Canada fleabane currently has no known resistance to Group 4 or Group 10 herbicides. Wide application window helps control late flushes.
Waterhemp (glyphosate resistant)	2,4,14 with 9 (glyphosate) or 10 (Liberty)	Diligent™ herbicide	Enlist 1 + glyphosate OR Enlist 1 + Liberty® 200 SN*	Save Groups 4,9,10 for second pass. Waterhemp populations are currently susceptible to both Enlist™ herbicide options.
Field Horsetail	2,4,9	Broadstrike RC + glyphosate + Enlist 1	Enlist 1 + glyphosate	2 effective modes of action on field horsetail (groups 2 and 4). Option for a 2nd in-crop application of Enlist 1. Excellent opportunity to manage this weed in a soybean crop

Enlist herbicides come with Colex-D™ technology for near-zero volatility and low drift

Enlist herbicides are critical tools enabling post-emergence control, without fear of off-target movement.

Talk with your retailer or download and use the **Field Guide app** to identify solutions for your farming operation.

Learn more at enlistcanada.ca



* Trademarks of Corteva Agriscience and its affiliated companies. © 2024 Corteva. The transgenic soybean event in Enlist E3™ soybeans is jointly developed and owned by Corteva Agriscience and M.S. Technologies L.L.C. LIBERTY is a registered trade-mark of BASF, used under license by BASF Canada Inc. © 2023 BASF Canada Inc. Enlist Duo™ and Enlist™ 1 are the only 2,4-D products authorized for use with Enlist™ crops. Consult Enlist herbicide labels for weed species controlled. Always read and follow label directions.